

## 1.5 Acres M/L, Tenth & Winchester

### Prime Retail Location

This is an extremely high traffic, corner location. Near Walmart and the Tenth Street professional corridor, and close to residential areas.

**Location:** Southwest corner of Tenth St. and Winchester Drive

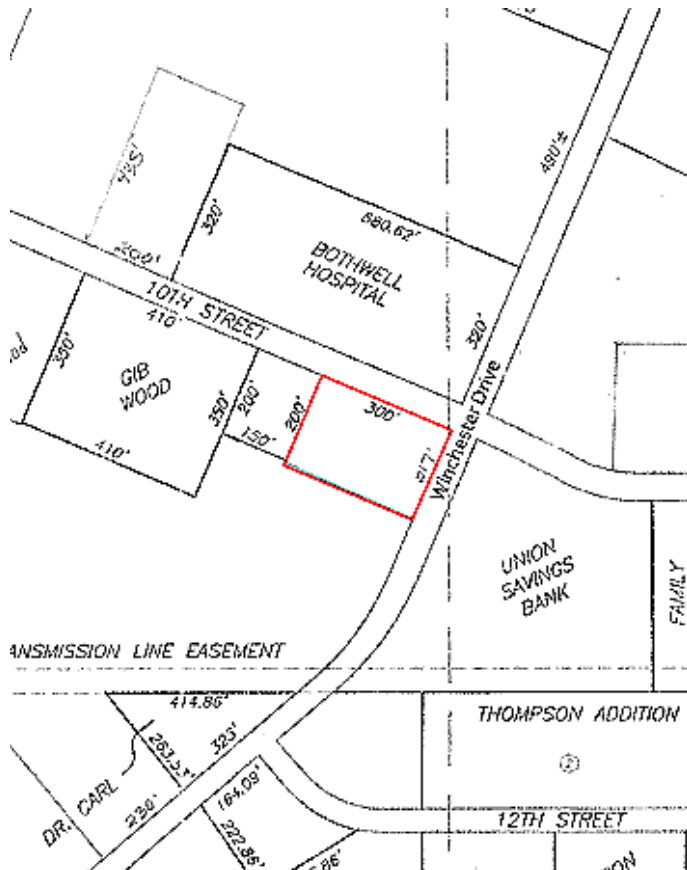
**Winchester Frontage:** 217'

**Tenth St. Frontage:** 300'

**Neighbors:** Winchester Meadows Retirement Complex, Bothwell Diagnostic Center, close to Walmart, Social Security office and numerous doctors' offices.

**Infrastructure:** All city utilities available

**Additional Acreage Available:** Yes



### **Contact:**

**Dianne Simon, Vice President  
Thompson Hills Investment Corp.  
906 Thompson Blvd  
PO Box 1546  
Sedalia, MO 65302-1546  
(660) 826-4800  
(660) 826-5255 (fax)**